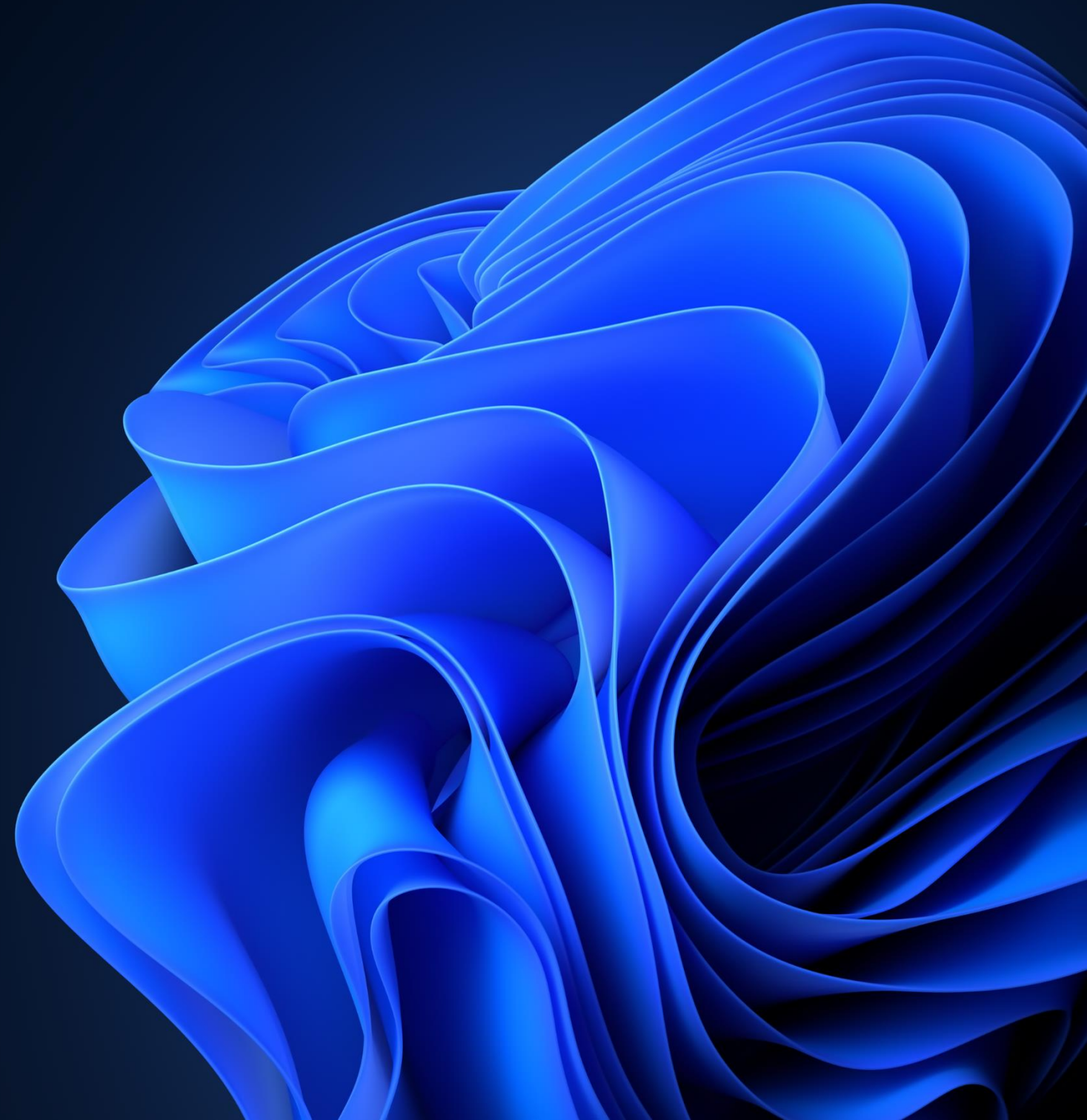
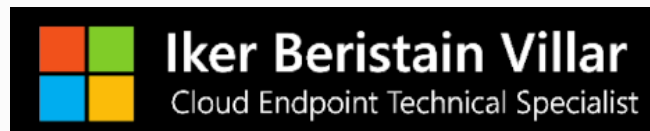




Windows 11



Why Windows 11



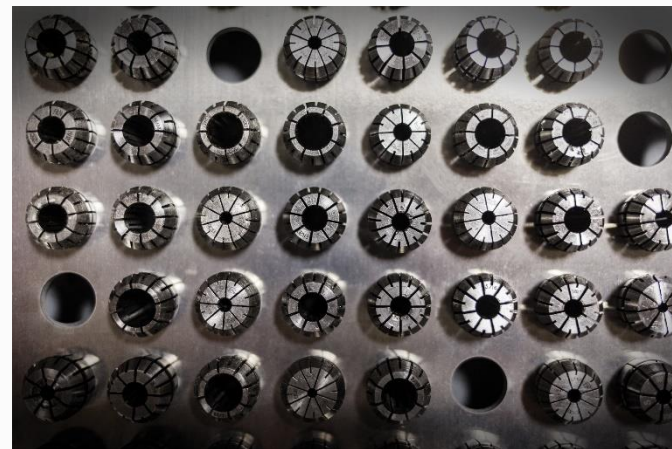
Why Windows 11

The pandemic is driving an increased need for agility and resilience

Maintain productivity at pre-pandemic levels while working from home



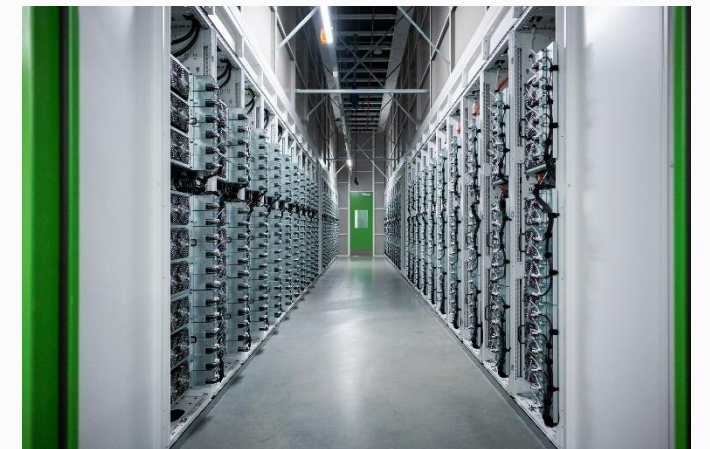
Reduce barriers to collaboration



Protect corporate data and endpoints from malware and ransomware



Deliver consistent workplace equipment and services for remote work



Designed for hybrid work



Productive

Improve productivity and focus with a simple, powerful user experience.

Collaborative

A smarter way to collaborate with Microsoft Teams integration.

Secure

Ready for Zero Trust, to protect data and secure access, anywhere.

Consistent

App compatibility and cloud management make adoption easy.

Work smarter with a
simple, powerful user
experience

Productive



Productive

Simple, modern visuals

Windows visuals to delight and focus on what matters.

Snap assist

Automatically keep your window layouts saved in perfect arrangement.

Widgets

Stay on top of what's important with personalized aggregated content.

Integrated voice typing

Effortlessly type a document or write an email without a keyboard.

Great tablet experience



A smarter way to
collaborate with Microsoft
Teams integration

Collaborative



Collaborate

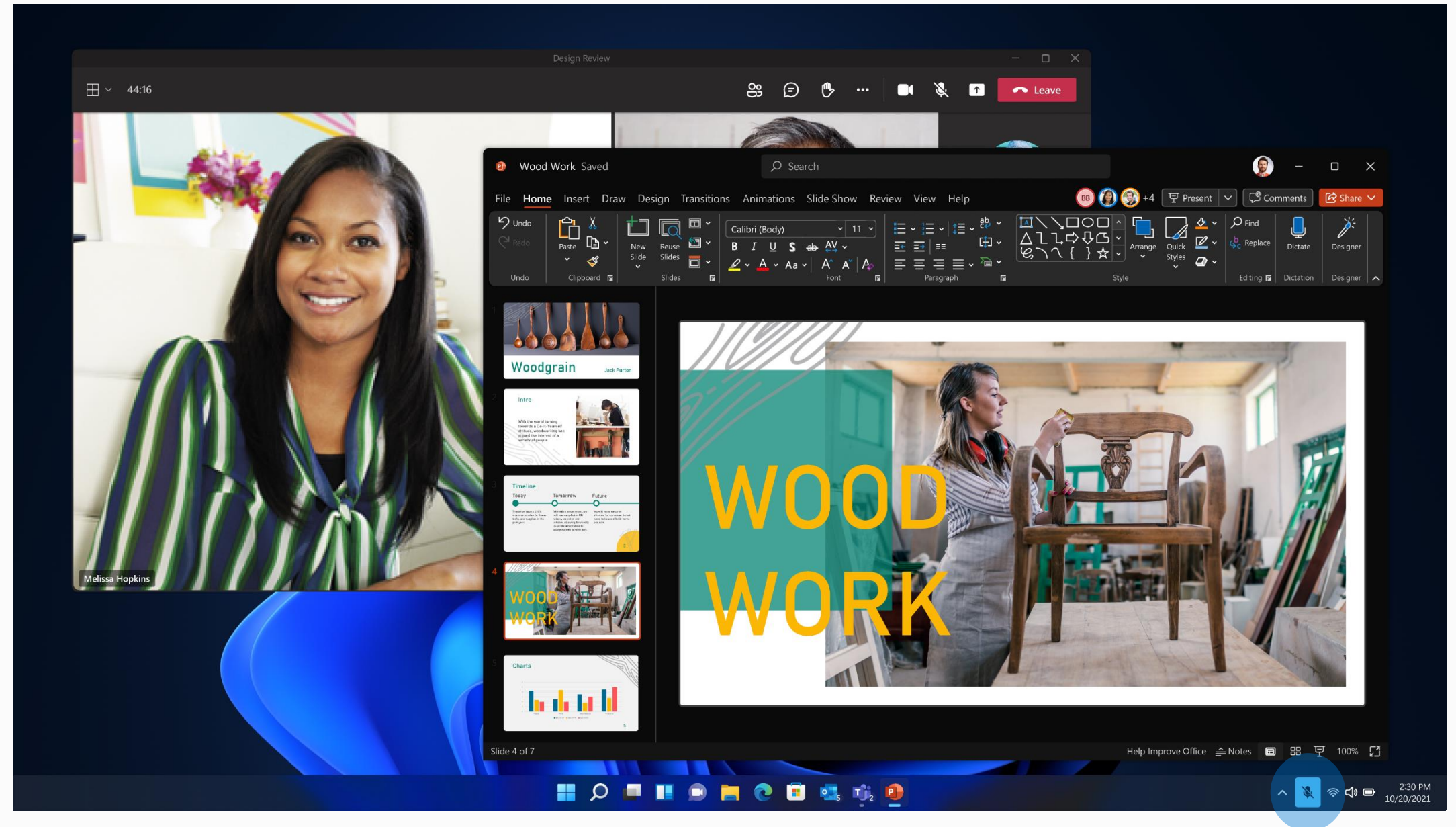
Share a window while in a meeting

Share any window from the Taskbar while in a call or in a meeting.

Inclusive video conferencing

Turn microphone on and off right from the taskbar so everyone's voice is heard.

Keep the background in the background with intelligent noise cancelling and blur.



Protect data and secure
identities in a zero-trust
world

Secure



Secure

The most secure Windows yet

Increased protection with built-in security and hardware-based isolation

Company PCs for remote workers

Ship the employee corporate owned devices that is locked to policy

Forget passwords, go passwordless.

Convenient, secure, single sign-on with Windows Hello for Business.

Some features require a new PC or a clean install of the OS

Some features require a commercial Microsoft 365 subscription service

Windows Hello requires a camera configured for near infrared (IR) imaging or fingerprint reader for biometric authentication. Devices without biometric sensors can use Windows Hello with a PIN or portable FIDO2 compatible security key



Security by default

Windows 11 delivers powerful protection from chip to cloud

In Windows 11, hardware and software security work together to help keep users, data, and devices protected.

- Protects against threats by separating hardware from software with hardware root-of-trust, for powerful security from the start
- Protect the OS with against unauthorized access to critical data
- Delivers robust application security and prevents access to unverified code
- Protects user identities with passwordless security
- Extends security to the cloud to help protect devices, data, apps, and identities from anywhere



*Requires new PC with Pluton processor, expected availability Spring 2022

Servicing and management
is consistent with Windows
10 to help you move
forward.

Consistent



Consistent in control

Deploy Windows 11 devices alongside Windows 10 devices

Managed from the cloud with solutions you already have.

Windows 10 apps work on Windows 11

Build on the same foundation as Windows 10

Provision and manage devices for the hybrid workforce

App Assure guarantees application compatibility

Proactively identify update targets with analytics

Securely print from anywhere to any printer with Universal Print

Run virtual apps like local with Azure Virtual Desktop



When apps work on
Windows 10, they work
on Windows 11.

Engage the App Assure service
to fix problems you identify

Microsoft takes responsibility for compatibility.

Guaranteed by App Assure.

791,553

Number of apps
evaluated

99.7%

Application
compatibility rate

88 M

Unblocked
endpoints

43.5 M

Helpdesk calls
prevented (estimate)

\$7.53 B

Estimated customer
cost savings

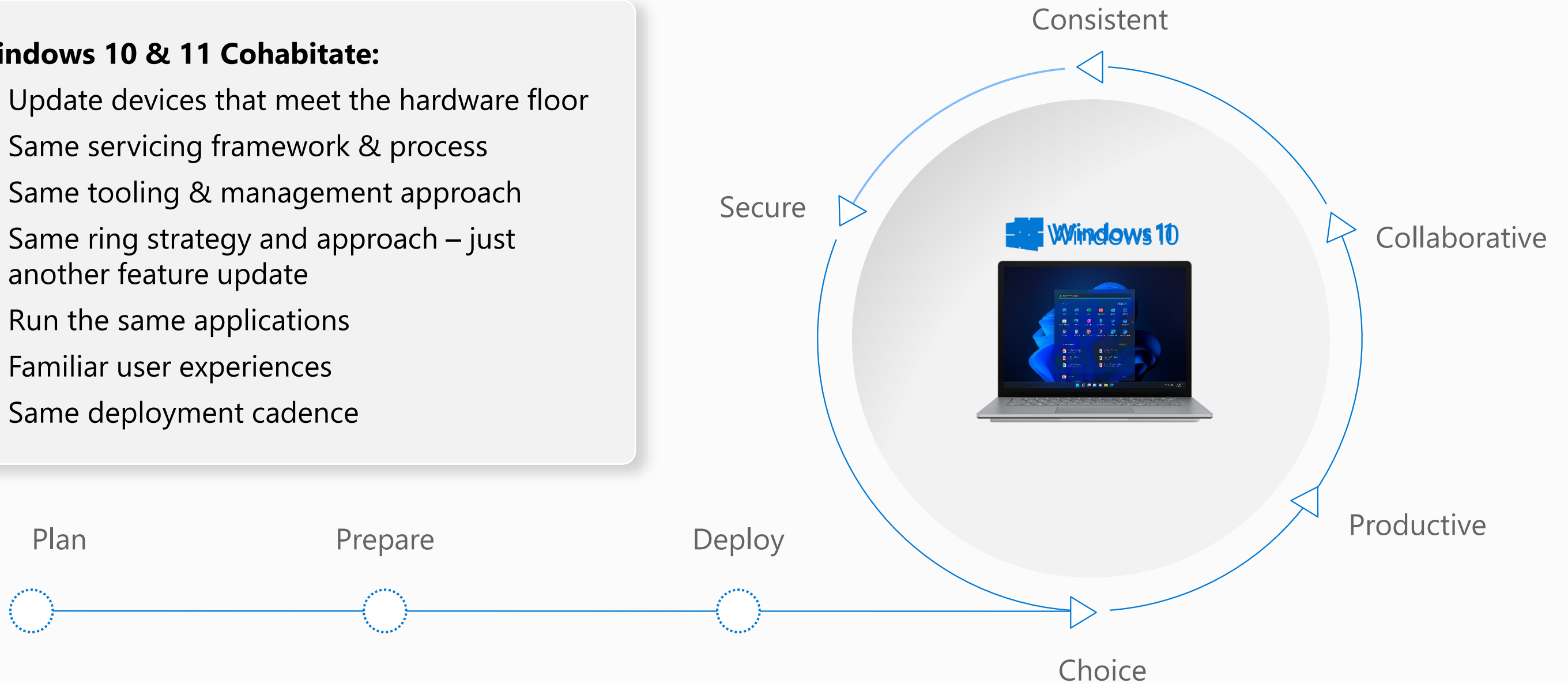
Use Test Base for Microsoft 365 (preview) to test your business-critical apps if you have a concern.

aka.ms/TestBase

Build for hybrid work

Windows 10 & 11 Cohabitate:

- Update devices that meet the hardware floor
- Same servicing framework & process
- Same tooling & management approach
- Same ring strategy and approach – just another feature update
- Run the same applications
- Familiar user experiences
- Same deployment cadence



Enterprise ready



Windows Lifecycle



- Two releases per year (Last release 22H2)
- Monthly cumulative quality updates
- Non-Volume Licensing editions – 18 months
 - Home
 - Pro
 - Pro Education,
 - Pro for Workstations
- Volume Licensing editions - 18 months (Spring) and 30 months (Fall)
 - Enterprise
 - IoT Enterprise
 - Education
 - Enterprise Multi-session



- One release per year
- Monthly cumulative quality updates
- Non-Volume Licensing editions – 24 months
 - Home
 - Pro
 - Pro Education,
 - Pro for Workstations
- Volume Licensing editions – 36 months
 - Enterprise
 - IoT Enterprise
 - Education
 - Enterprise Multi-session

E3 Benefits roadmap

Windows cloud activation ☁

Automatically upgrades Pro to Enterprise

Windows Update for Business deployment service ☁

Provides control over the approval, scheduling, and safeguarding of updates delivered from Windows Update

+ Firmware & driver updates.

Microsoft 365 Admin Center integration ☁

Enhanced visibility into Release Health and security posture with Windows Secure Score.

Universal Print ☁

Serverless printer management, eliminates print servers and the need to install printer drivers.

+ Print from all Office for the web apps and secure release.

Microsoft Endpoint Manager integration ☁

Endpoint analytics remediation

BitLocker key management and recovery

Windows feature update device readiness report

Windows feature update compatibility risks report

+ Application compatibility report

+ Windows subscription management

Windows diagnostic data controls ☁

Ability to become controller of your diagnostic data and store it in an Azure compliance boundary.

Windows Autopatch ☁

Intelligent services that keeps Windows, Microsoft Edge and Office deployments updated. (available July 1, 2022)

In-product organizational messaging service 💻

Corporate communication to end users during device setup and beyond

Microsoft Defender Application Guard 💻

Hardware-based VBS isolation of Microsoft Edge

Direct Access and Always-On VPN 💻

Secure access to on-premises and private cloud resources

Personal Data Encryption 💻

Protect personal files using Windows Hello credentials under lock screen

Best virtualization support 💻 ☁

License to run Local VM, access to Windows 365 Enterprise; Azure Virtual Desktop and VDA client license included.

FastTrack and App Assure services

Access to FastTrack engineers for Windows 10/11, Microsoft Edge, Universal Print, and application compatibility remediation.

Long Term Servicing Channel 💻

Windows Enterprise OS version for specialized devices

Enterprise lifecycle value

More time to test and keep the business running

More time to pilot deployment rings

More time to optimize your update process

One single Feature Release in
the second half of the year

H2

H1

H2

H1

H2

H1

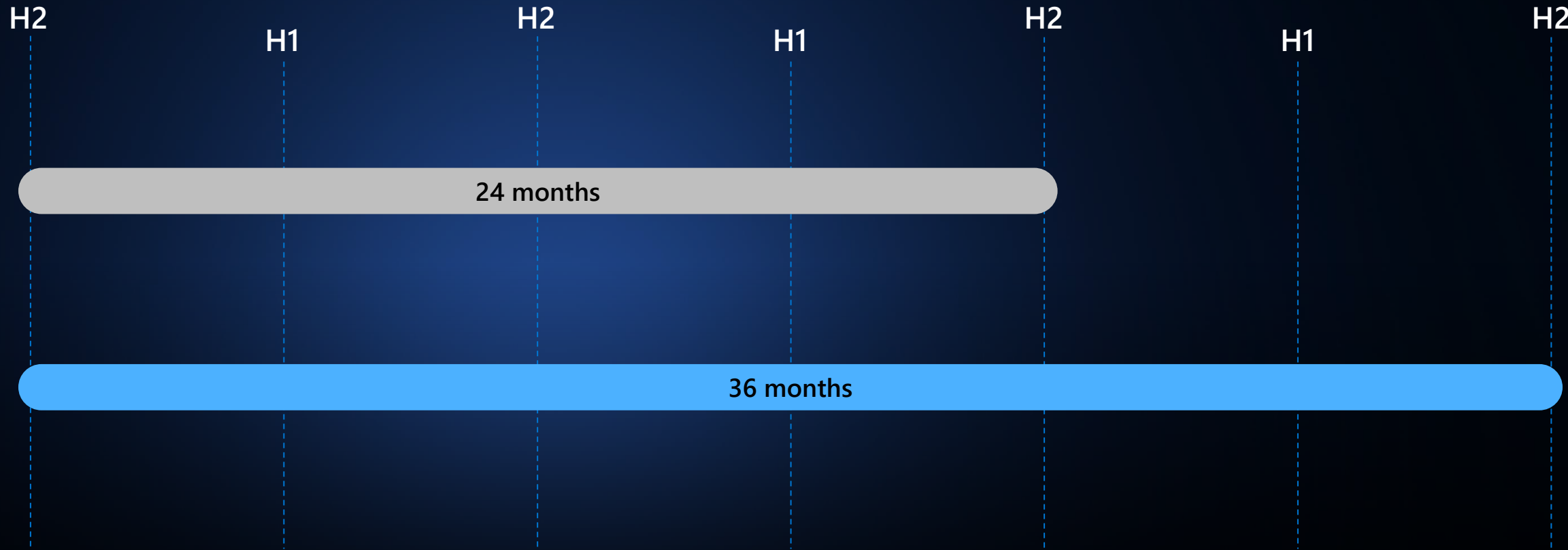
H2

Windows 11 Pro

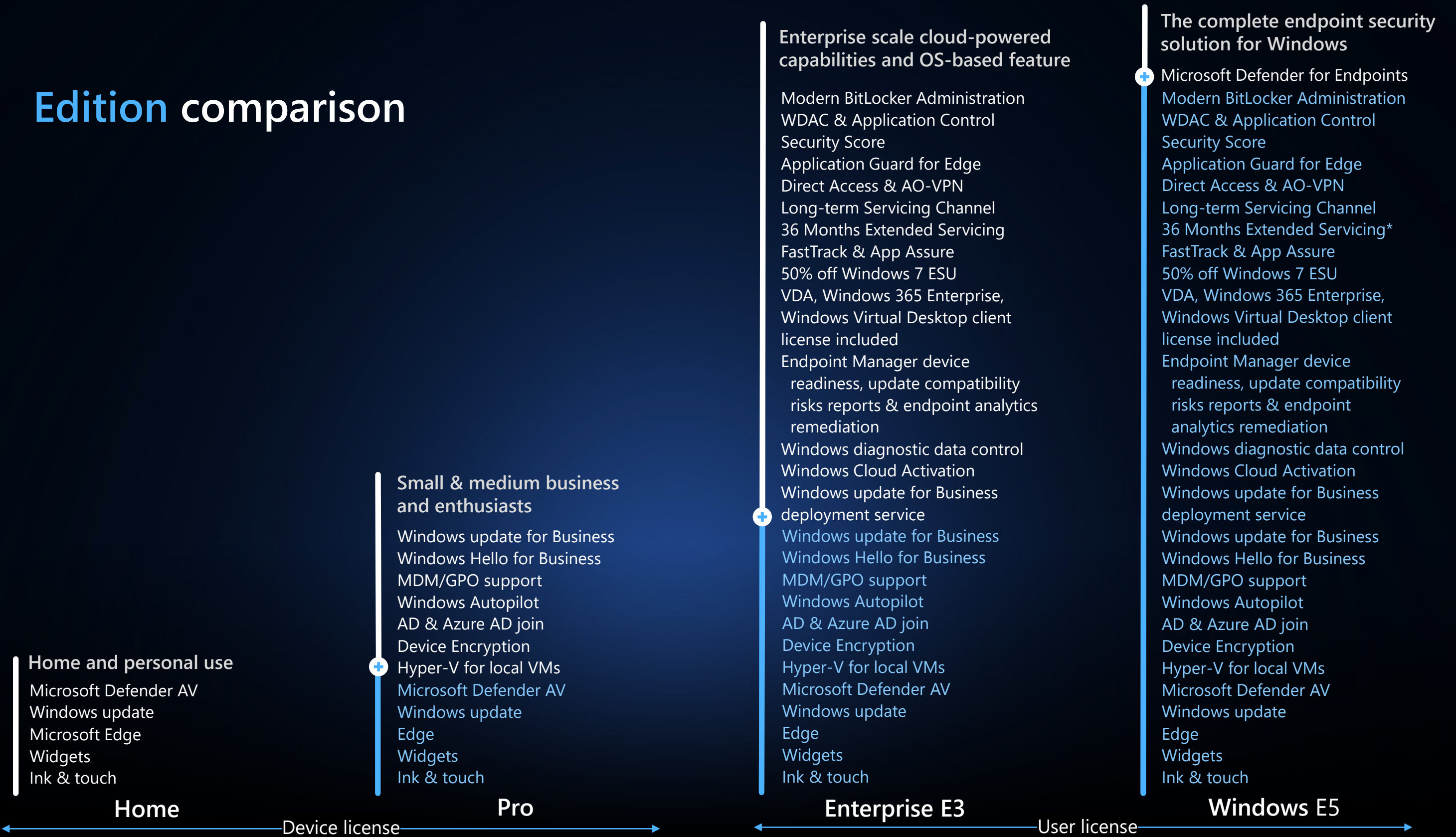
24 months

Windows 11 Enterprise

36 months



Edition comparison



Hardware requirements

To install or upgrade to Windows 11, devices must meet a set of minimum hardware requirements

- **Processor:** 1 gigahertz (GHz) or faster with two or more cores on a [compatible 64-bit processor](#) or system on a chip (SoC)
- **RAM:** 4GBs or greater
- **Storage space:** 64GBs or larger
- **Graphics card:** Compatible with DirectX 12 or later with WDDM 2.0 driver
- **System firmware:** UEFI, Secure Boot capable
- **TPM:** Trusted Platform Module (TPM) version 2.0
- **Display:** High definition (720p) display, 9" or greater, 8 bits per color channel
- **Internet connection:** Internet access is required to perform updates and to download and take advantage of some features. Windows 11 Home edition requires internet connectivity and a Microsoft Account to complete device setup on first use.
- **Note:** S mode is only supported on Home Edition on Windows 11. If you are running a different edition of Windows in S mode, you will need to first [switch out of S mode](#) prior to upgrading. Switching a device out of Windows 10 in S mode also requires internet connectivity.

Learn more: <https://docs.microsoft.com/windows/whats-new/windows-11-requirements>

Get started today



Consistent management and servicing

Upgrade to Windows 11 using tools and processes that you already have in place today for Windows 10

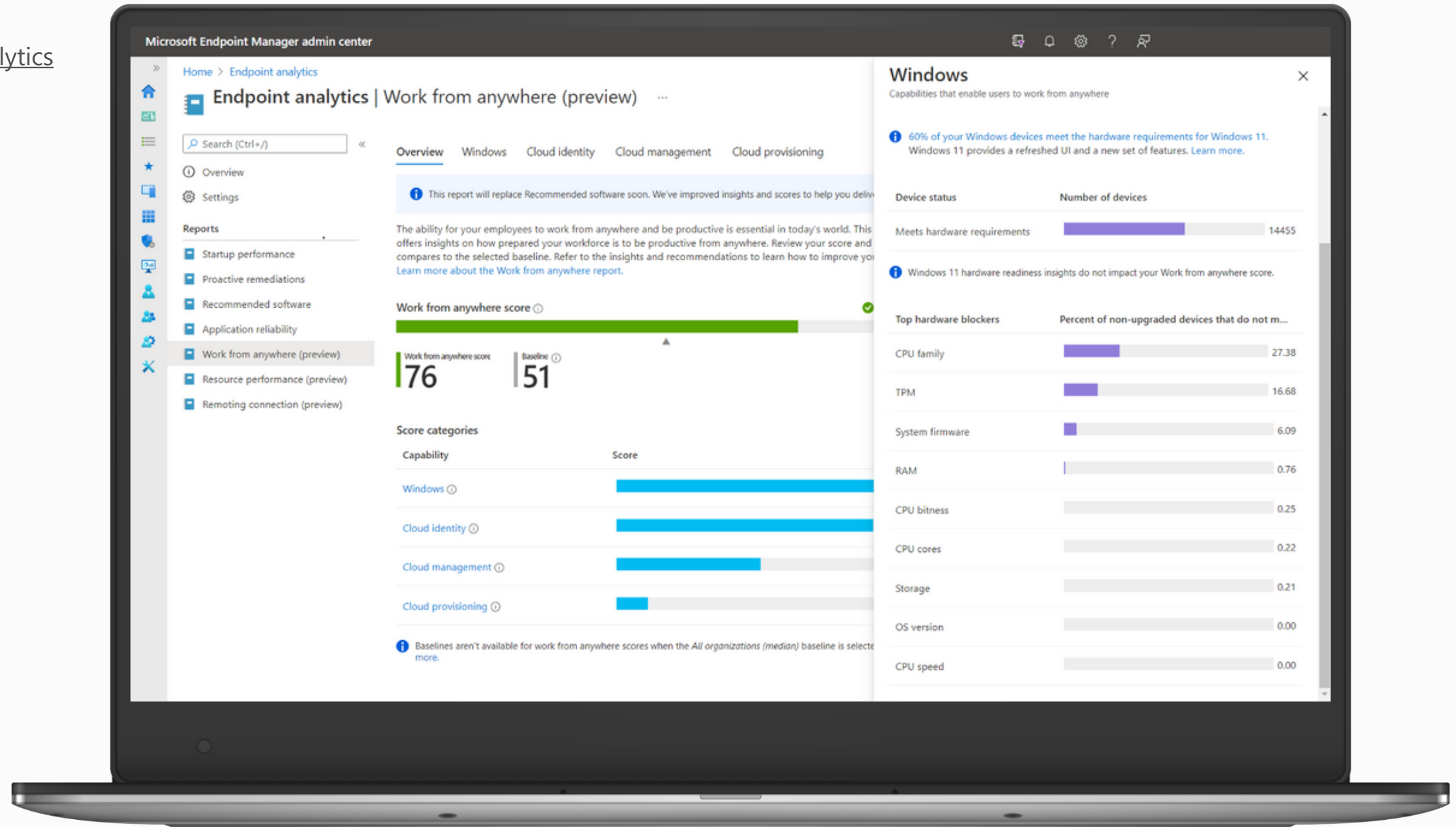
Upgrade channel	Management tool, analytics	Upgrade support by general availability
On-premises	Windows Server Update Service, Windows Update for Business	✓
	Microsoft Endpoint Configuration Manager (SCCM)	✓
	Endpoint Analytics	✓
The cloud	Group Policy Management Console (GPMC), local Group Policy	✓
	Microsoft Endpoint Manager Intune, Windows Update for Business	✓
	Update Compliance, Endpoint Analytics	✓
Third-party	Third-party management tools and analytics	✓ *

*Dependent on third-party partner support.

Check Hardware requirements with Endpoint analytics

Learn more:


aka.ms/windows/EndpointAnalytics



Manual test hardware requirements with PC Health Check

Learn more:
aka.ms/GetPCHealthCheckApp

PC Health Check



HANSU-SB2B

16 GB RAM

1024 GB SSD

Less than 1 year old

Rename your PC

?

About

Learn more about your device in the Surface App

PC health at a glance

Introducing Windows 11

Let's check if this PC meets the system requirements. If it does, you can get the free upgrade when it's available.

Check now

Backup & sync

See details ^

Your organization manages back up and sync settings on this PC. Contact your IT admin for more info.

Windows Update

Last checked: Friday 3:19 PM v

Battery capacity

See details v

Storage capacity

70 % full v

Startup time

See details v

Related links

Tips on PC health

More on Windows 11

Thank you

