



Digital Transformation on education

Tommi Lehmusto
Digital Advisor

Trends and drivers

Technology is changing education

50B

Estimated number of connected devices worldwide by 2020¹

\$1.7T

Total worldwide spending on IoT devices and services by 2020²

30%

Percentage of total US smartphone owners using device for online classes or educational access in 2015³

\$51B

Worldwide self-paced e-learning market forecast for 2016⁴

\$12.2B

The estimated worldwide market for mobile learning products and services by 2017⁵

98%

Forecast percentage of people using blended in-class/online curricula in 2020⁶

1 Cisco Internet Business Solutions Group, 2011

2 IDC, Explosive Internet of Things Spending to Reach \$1.7 Trillion in 2020, 2015

3 PEW Research, U.S. Smartphone Use in 2015

4 Docebo, 2015 Elearning Forecast

5 Education Week, Technology in Education: An Overview, May 2016

6 Knewton Infographics, The State of Digital Education Infographic

Digitalization is in the center

of improving teaching and learning



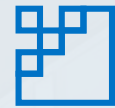
**Empower your
students**



**Empower your
educators**



**Optimize your
operations**



**Transform
learning**

Digital transformation

Microsoft is focused on empowering every individual and every organization to achieve more through digital transformation.



Engage your students

Building better, stronger student engagements by harnessing data representing a complete view of your students, then drawing actionable intelligence, predictive insights that can deliver personalization at scale.



Empower your educators

Empowering educators with tools that fuel collaboration and productivity, while mitigating the risks that come with providing freedom and space to employees.



Optimize your operations

Optimizing operations to reshape customer relationships and service models by gathering data across a wide, dispersed set of endpoints, and drawing insights through advanced analytics that can be used to introduce improvements on a continuous, real time basis.



Transform learning

Reinventing learning, services and business models using digital content to capitalize on emerging revenue opportunities..

Enablers for Digital Transformation

010110
001101
101010

Data



Analytics



Cloud

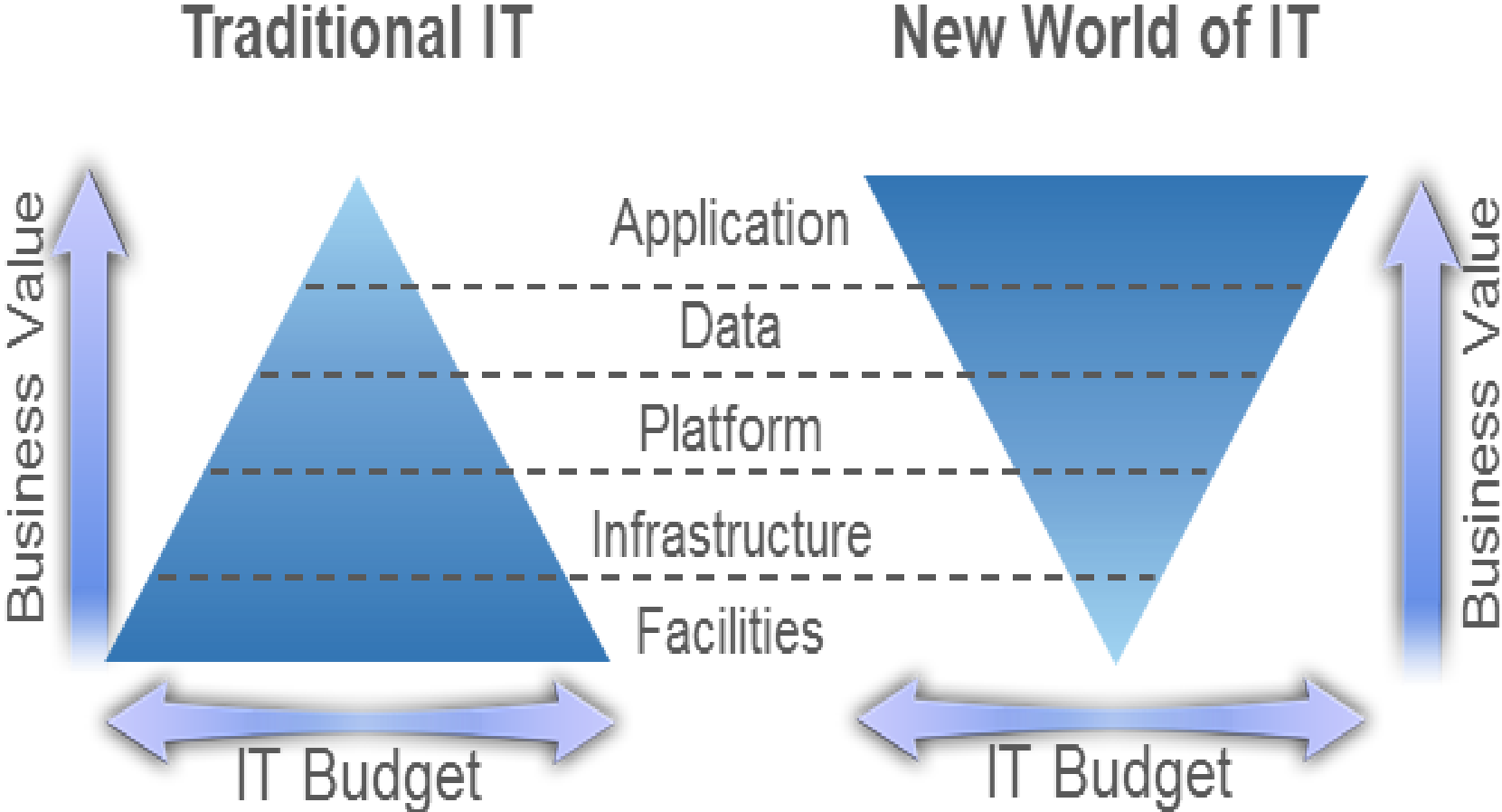
Digital transformation

What if technology could help you...

- Use data to proactively identify and accommodate students with individual learning needs?
- Effectively recruit, enroll, engage, and retain students with powerful CRM tools?
- Reduce the cost and complexity of educational IT environments by utilizing hybrid cloud?
- Enable dynamic, personalized, anytime learning—in and out of the classroom?
- Focus on student performance and drive better outcomes across the education continuum?



Traditional IT vs. New world of IT



Digital Transformation is about cultural shift

Traditional IT

New world of IT

Focused on silos

Focus on customers and customer experience

Buyers controls offering with their needs

Constantly improving and developing offering

Individual heroes

Group and organizational success

Hierarchical structure, very predictable

Try fast, fail fast -culture

The background features several overlapping, wavy lines in various shades of blue, creating a sense of motion and depth. The lines are most prominent on the left side and fade towards the right.

Solid infrastructure is a
good ground for digitalization

Current reality for students



EC2



Microsoft Azure



On-premises



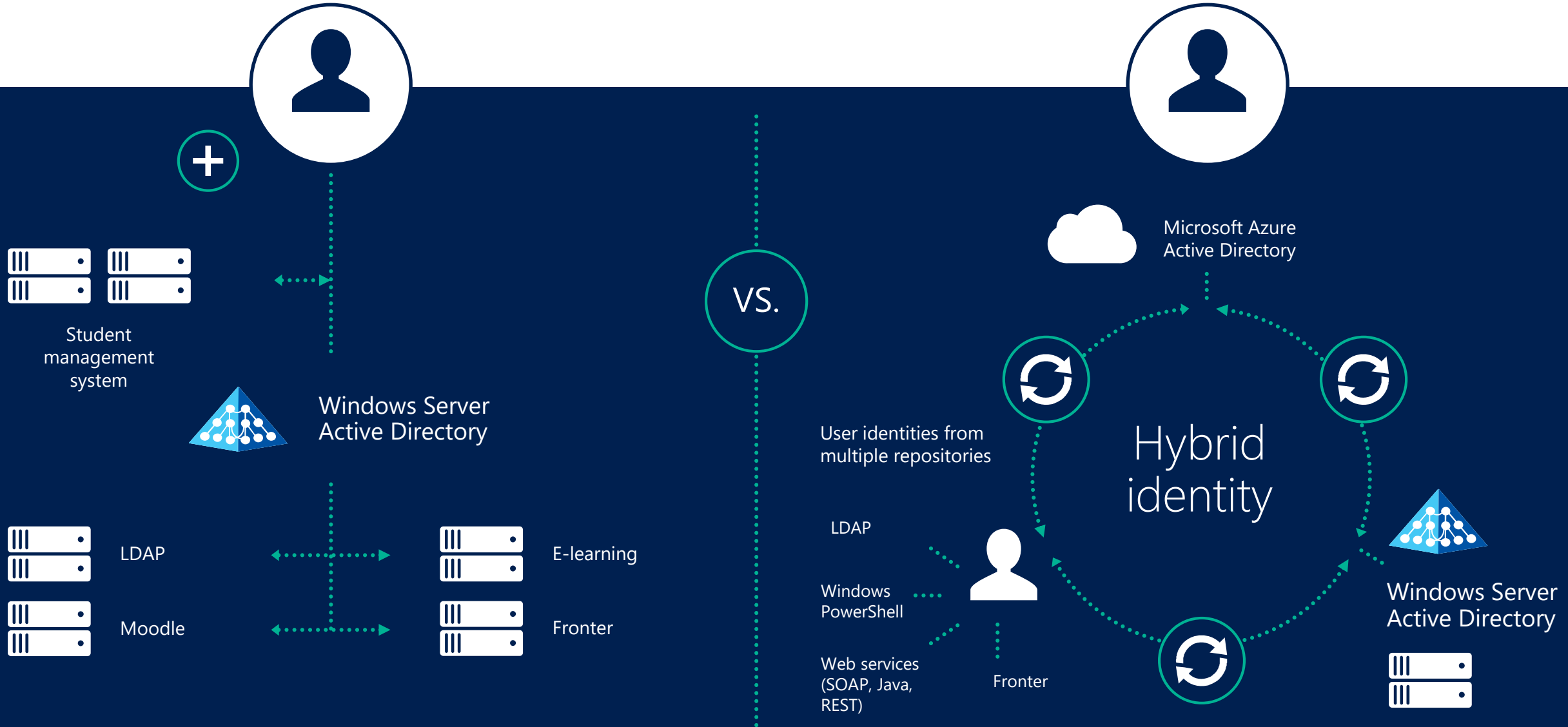
Managed devices



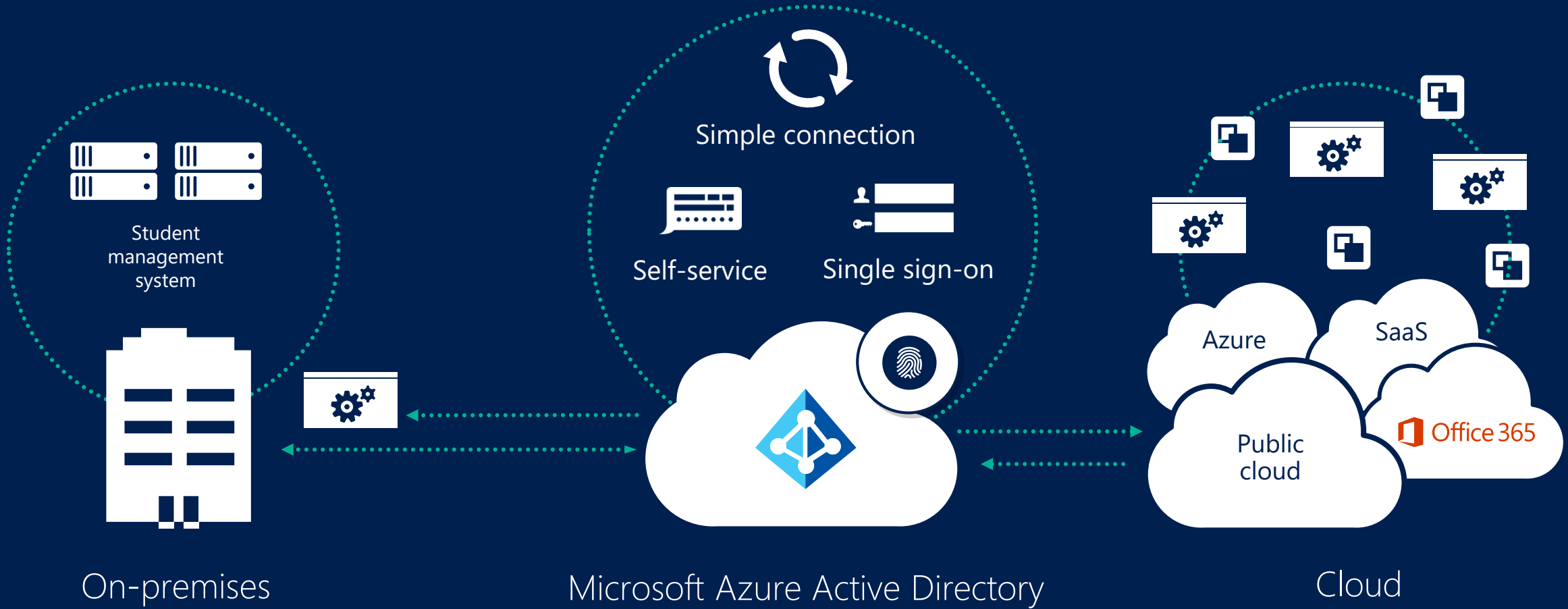
Active Directory



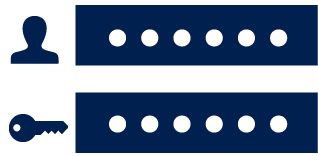
Identities live in too many places



Target state for identity management



Benefits from identity target state



Single sign-on

- Easy connection to existing assets
- Unified experience across student and teacher devices



Manage everything

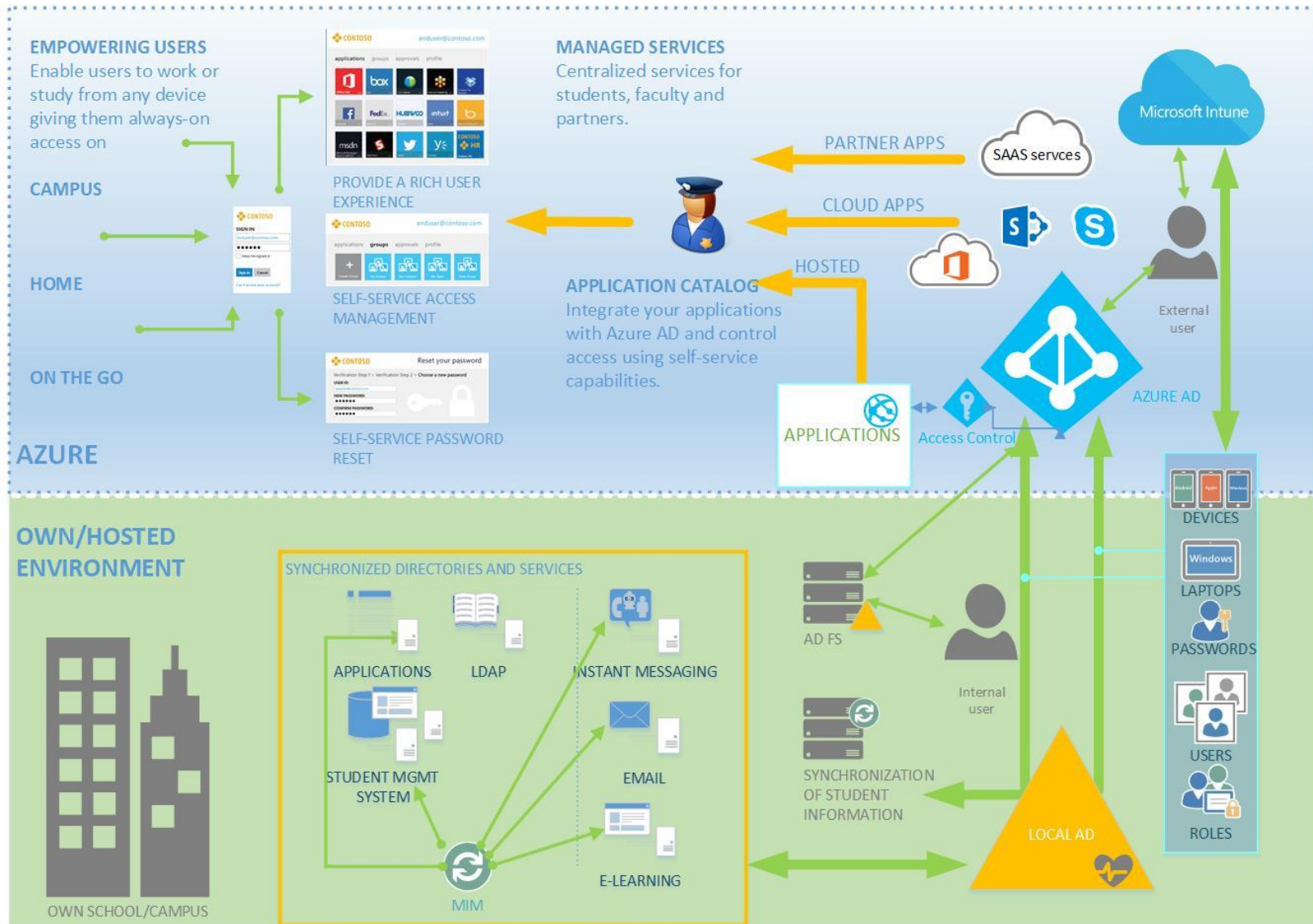
- Dynamic groups
- Provisioning
- B2B collaboration



Self-service capabilities

- Password reset
- Group membership
- MyApps portal

Infrastructure target state – alternative view



Characteristics of target state

- Personal and school purchased mobile devices are trusted devices
- Single sign-on experience for the provided services
- Office 365 identity will be main identity to access services and applications
- Access from anywhere, with any device
- School mobile devices are included in asset management
- Security risks (identity thefts, DoS attacks etc.) are reduced
- Technology is based on Office 365, Azure AD and Microsoft Intune

Microsoft education solution
platform

Our aim is to solve the many challenges of technology in the classroom

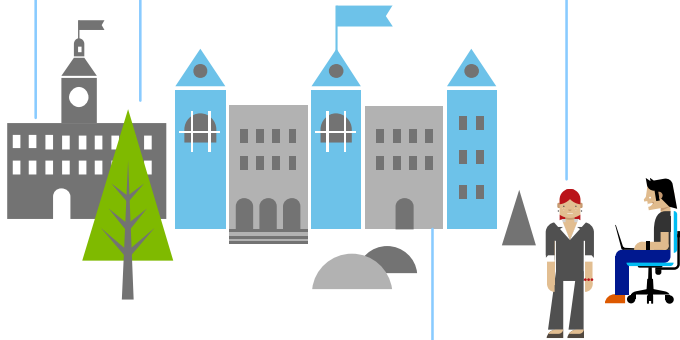
Schools

Integrate with existing compute environments

Fit within budget constraints

Help teachers improve learning outcomes

Meet privacy & regulatory concerns



Students

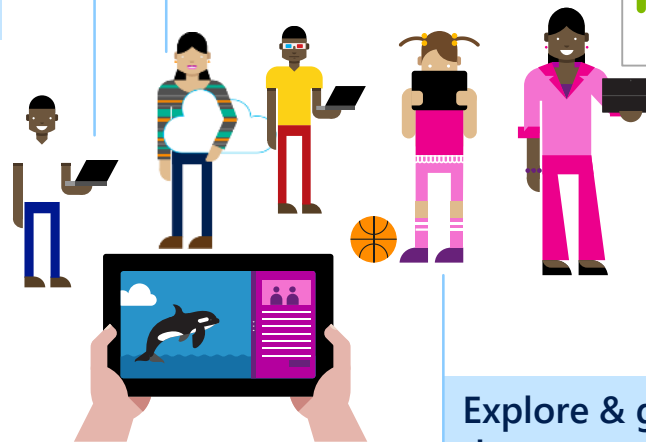
Work in groups or individually

Collaborate easily with other students and teachers

Use the newest tools and technologies

Less time "tech-ing," more time teaching

Explore & get things done across all devices

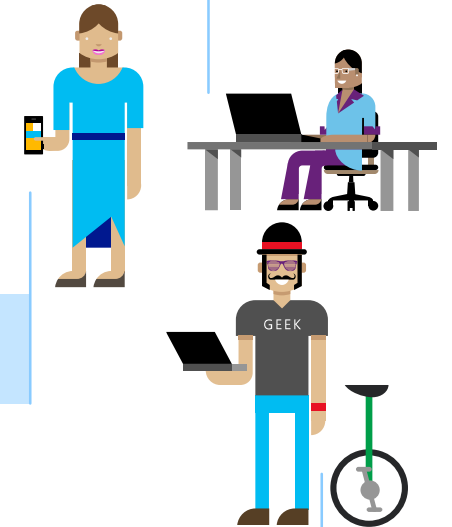


Teachers

Inspire students and save time

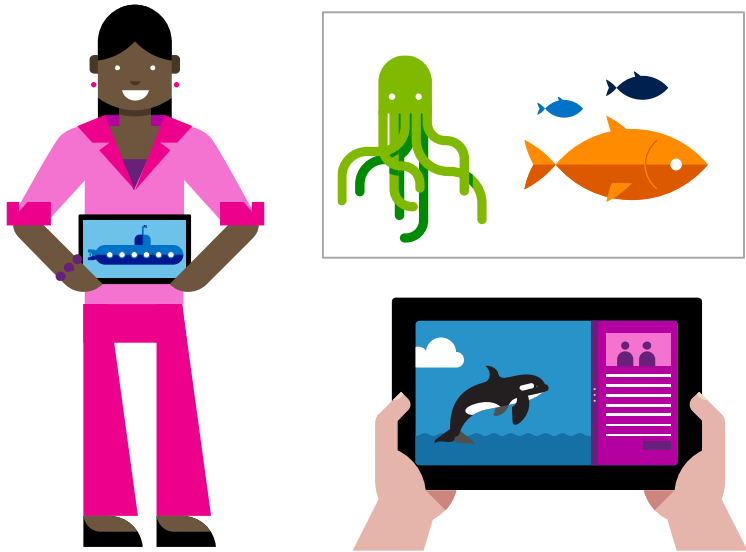
Teach kids across a wide range of learning abilities

Use a variety of teaching styles to reach all students

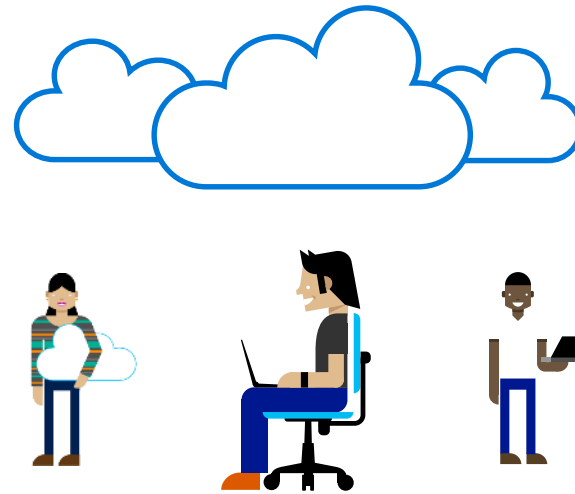


Education needs are unique, but have shared needs

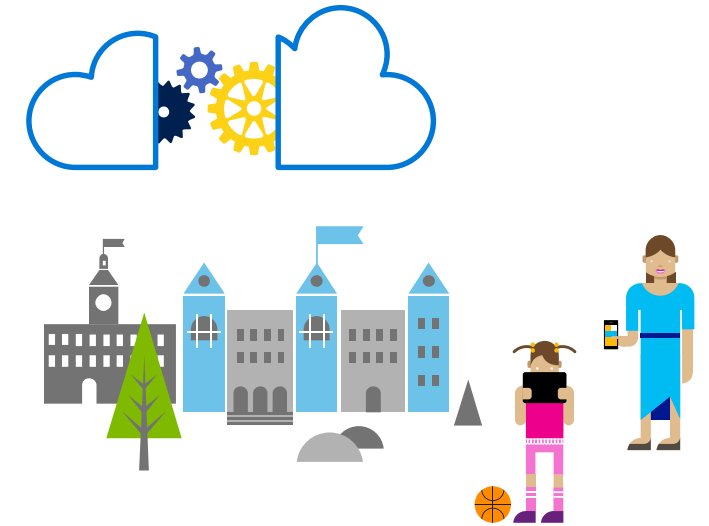
Immersive Education Experiences



Cloud Productivity Platform



Intelligent Cloud & Infrastructure



OS and Devices

The Microsoft Education Solution Platform

Immersive Education Experiences

OneNote Class Notebook

Learning Tools

Skype

Minecraft: Education edition

Microsoft Classroom

Sway

Bing

Kodu

Microsoft Edge

Touch Develop

HoloLens

Visual Studio

One school identity for students and teachers

Cloud Productivity Platform



Azure Active Directory

Compliance

Collaboration

Compatibility

Identity

Intelligent Cloud & Infrastructure

Windows Store

ID and Single Sign on

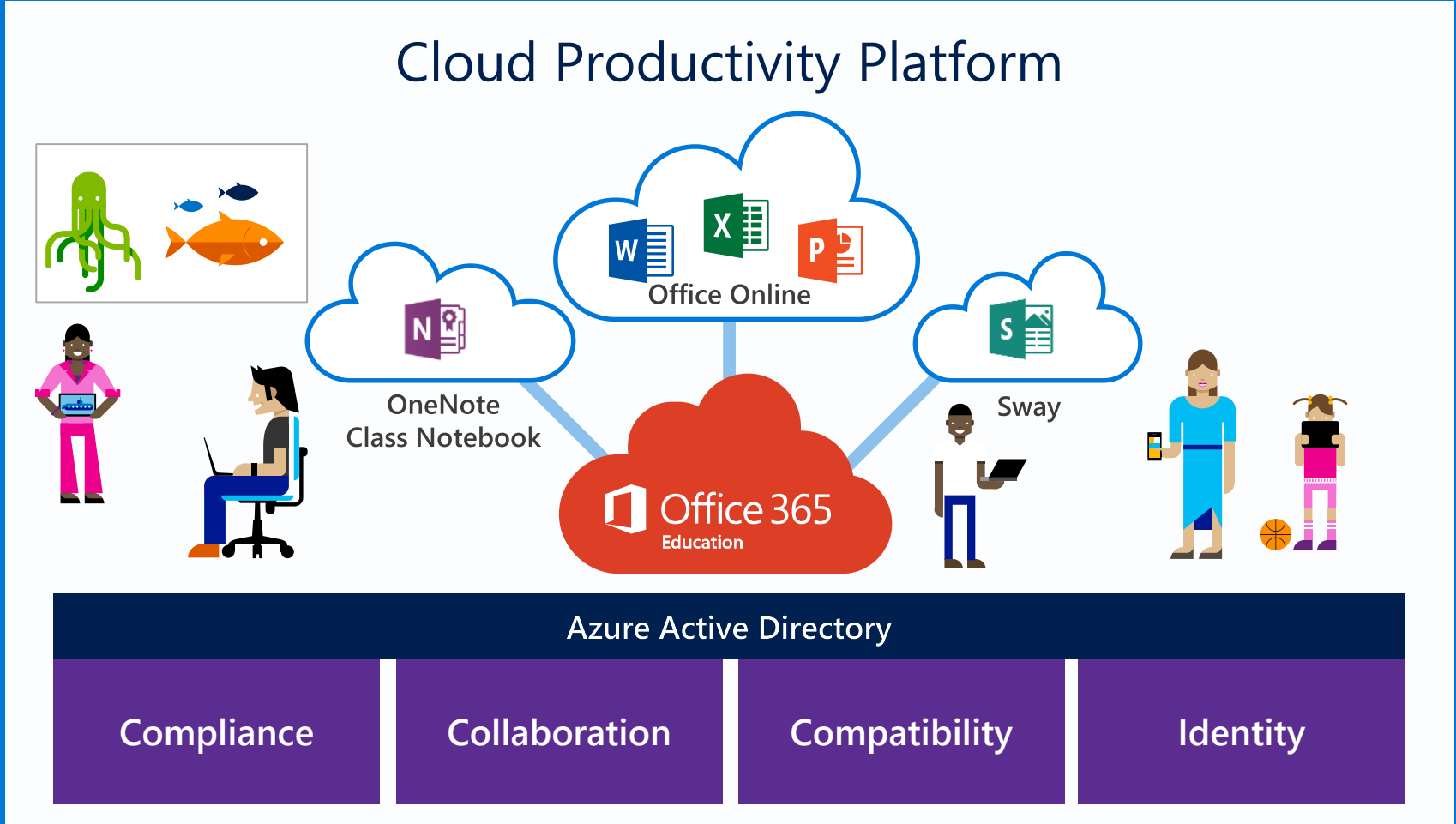


Management and Security

Device Management

The Microsoft Education Solution Platform

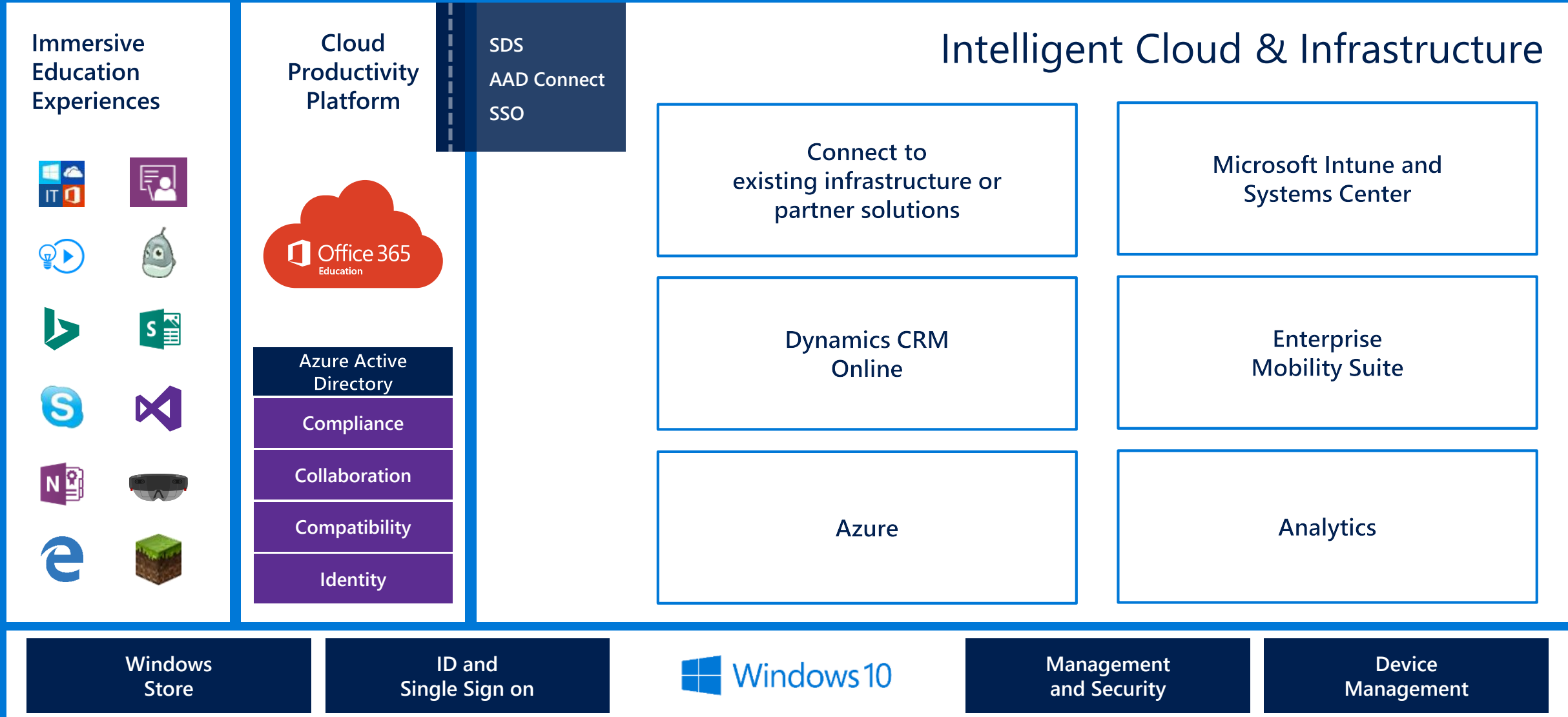
Immersive Education Experiences



Intelligent Cloud & Infrastructure

OS and Devices

The Microsoft Education Solution Platform



The Microsoft Education Solution Platform

Immersive Education Experiences

Cloud Productivity Platform



Intelligent Cloud & Infrastructure

Azure Active Directory

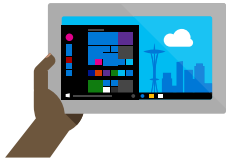
Compliance

Collaboration

Compatibility

Identity

OS and Devices



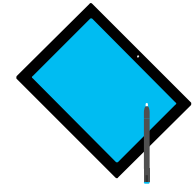
Windows Store



ID and Single Sign on



Management and Security



Device Management

Easy to get started, no limit to how far you can grow

